

Croft Down Road,



£270,000

Located in the charming area of Croft Down Road, Solihull, this delightful mid-terrace house is a true gem waiting to be discovered. Boasting one reception room, three cosy bedrooms, and a well-maintained bathroom, this property is the epitome of a perfect family home.

Built in approx. 1940, this house exudes character and charm while offering a comfortable living space of 842 sq ft. The off-road parking adds convenience to your daily routine, ensuring you never have to worry about finding a spot for your vehicle.

One of the standout features of this lovely home is the conservatory, a tranquil space where you can relax and unwind while enjoying the beauty of your surroundings. Additionally, the garden room provides the perfect setting for hosting gatherings with friends and family or simply enjoying a quiet moment with a cup of tea.

This property is truly a well-presented home, meticulously cared for and ready for you to move in and make it your own. With its ideal layout and charming features, this house is the perfect setting for creating lasting memories with your loved ones. Don't miss out on the opportunity to make this house your forever home.



Croft Down Road,

- Mid Terraced
- Well Presented
- Conservatory
- Gas Central Heating
- Ideal For First Time Buyers
- Off-Road Parking
- 3 Bedrooms
- UPVC Double Glazing
- Garden Room

Lounge

8'10" x 12'1" (2.70m x 3.70m)

Double glazed bay window to front, wood flooring, ceiling downlights, wall mounted radiator, coving to ceiling, chimney with fireplace

Kitchen/Dining Room

15'1" x 12'1" (4.60m x 3.70m)

Wood flooring, double glazed window and sliding door to rear, coving to ceiling, designer wall mounted radiators, ceiling light, worktop, storage cupboards, ceiling light, drainer sink with mixer tap, splashback. Integrated appliances include a dishwasher, cooker, oven and extractor hood

Conservatory

15'1" x 7'6" (4.60m x 2.30m)

Double glazed windows and patio doors to rear, tiled flooring, ceiling light, wall mounted radiator

Bedroom 1

11'1" x 9'2" (3.40m x 2.80m)

Double glazed window to rear, carpet, ceiling light, wall mounted radiator, fitted wardrobes with overhead storage

Bedroom 2

11'1" x 9'2" (3.40m x 2.80m)

Double glazed window to front, ceiling light, wall mounted radiator

Bedroom 3

8'10" x 6'6" (2.70m x 2.00m)

Double glazed window to front, carpet, wall mounted radiator, ceiling light

Bathroom

7'10" x 5'2" (2.40m x 1.60m)

Privacy double glazed window to rear, floor and wall tiles, bath with shower unit, vanity wash unit with mixer tap, toilet with douche kit, ceiling light

Garden Room

Artificial lawn, fitted seating, lighting

Garden

Patio, fence panels to boundaries, artificial lawn

Directions



Croft Down Road,



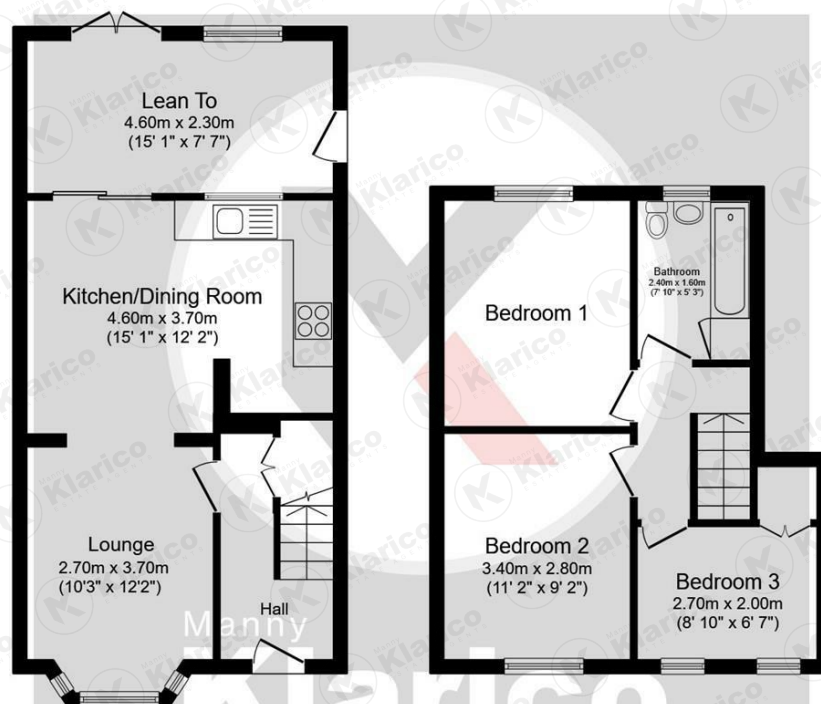
Croft Down Road,



Croft Down Road,



Croft Down Road,



Ground Floor

Floor area 43.6 m² (469 sq.ft.)

First Floor

Floor area 34.6 m² (373 sq.ft.)

TOTAL: 78.2 m² (842 sq.ft.)

This floor plan is for illustrative purposes only. It is not drawn to scale. Any measurements, floor areas (including any total floor area), openings and orientations are approximate. No details are guaranteed, they cannot be relied upon for any purpose and do not form any part of any agreement. No liability is taken for any error, omission or misstatement. A party must rely upon its own inspection(s).



Manny
Klarico
ESTATE AGENTS

176 Highfield Road
Hall Green
Birmingham
West Midlands
B28 0HT

0121 777 7211

www.mannyklarico.co.uk

